

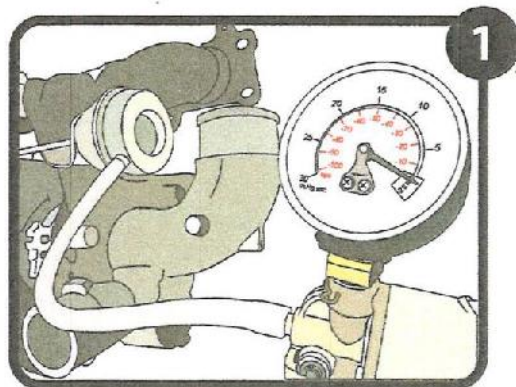
# Turbocharger Install Instructions

## Step 1 – Transfer Your Original Actuator

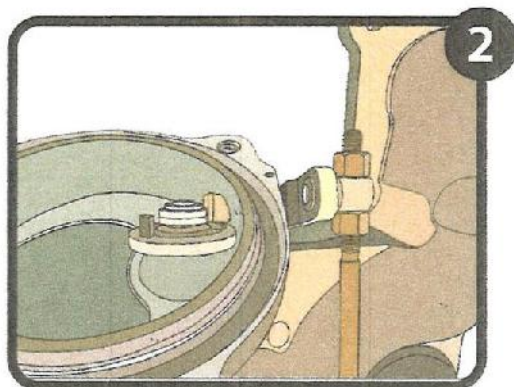
Thank you for your purchase with Turbo Parts Canada.

The waste gate actuators found on the 2014-2017 Land Rover Evoque's are vacuum actuated.

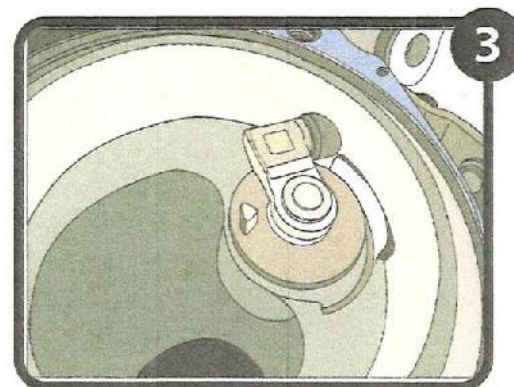
You will need to do the following steps to transfer the original actuator onto your new TPC turbocharger.



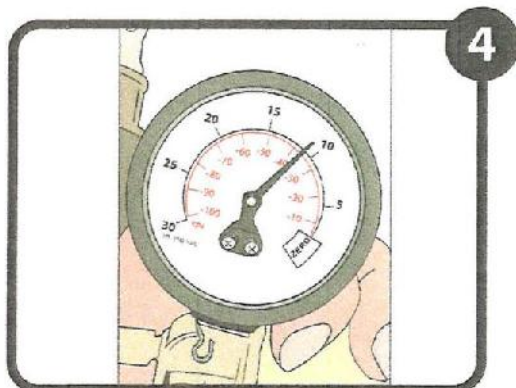
1 Install vacuum hand pump to the original actuator's nipple like in illustration.



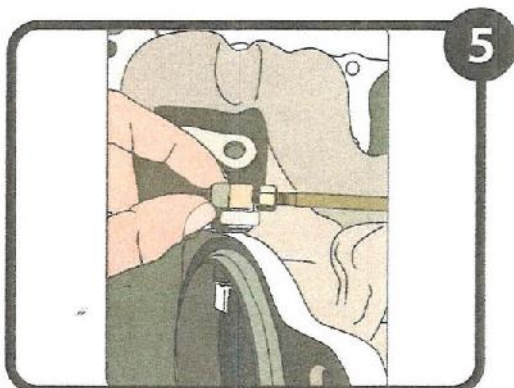
2 Waste gate flapper disc starts in the open position from factory (2014-2017).



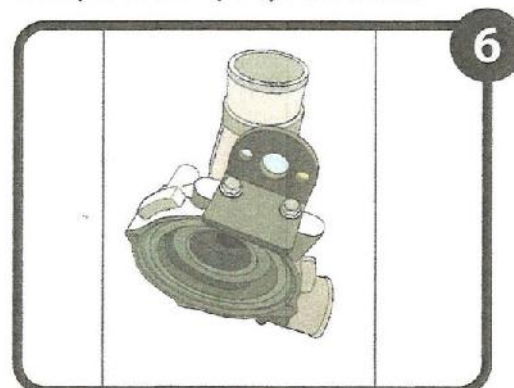
3 With the vacuum pump attached to the nipple, record how many pumps it takes to close the flapper disc.  
Example: 10 hand pumps disc closed.



4 When disc is properly closed you should not be able to turn the disc. With the flapper disc snug against housing, you can now record the in.Hg reading of on your vacuum pump gauge.



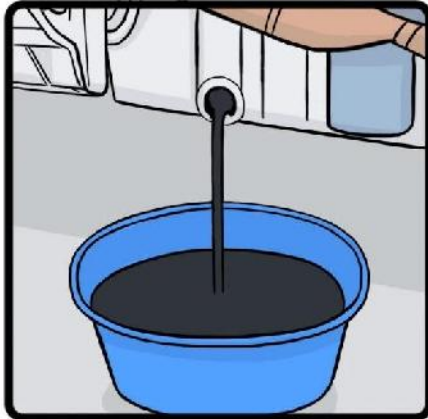
5 After you have recorded these parameters. You can now remove the 10mm nut at the end of the rod and the two at the actuator bracket.



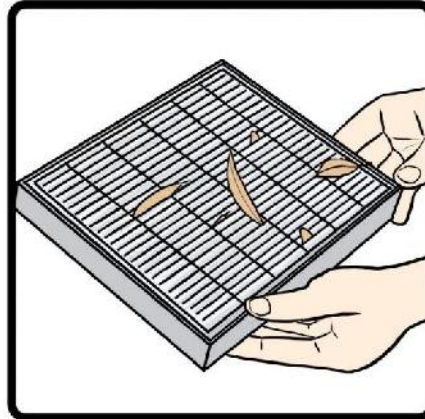
6 Proceed with the installation of the original actuator/bracket to the new TPC turbocharger by repeating the previous steps. Make sure all nuts and bolts are secured properly after installation of new parts and turbocharger.

## Step 2 – Installing the Turbocharger

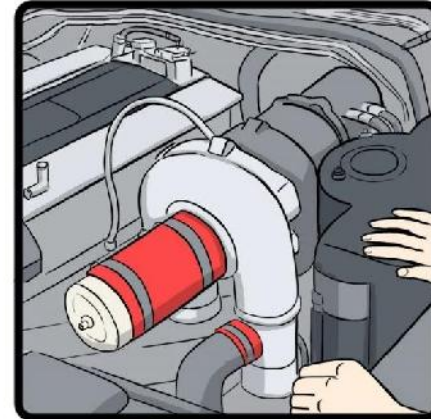
You want your turbocharger to last and so do we! Follow our short guide to help you ensure a long service life of your new turbocharger.



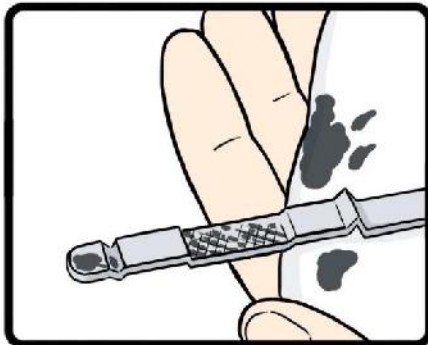
**1.** Prior to installing new turbocharger, the old motor oil and oil filter must be drained and properly disposed of. A new oil feed line and oil filter must be installed with your new turbocharger to validate warranty.



**2.** While the air intake is off, it should be properly cleaned or replaced. Ensure no debris enters any of the turbo housings or oil feed/drain to prevent premature turbo failure.



**3.** Once turbo has been installed and all piping connected, you must now do a "Boost Leak Test". A "Smoke Test" is acceptable with proper smoke machine. Testers must be installed at the turbo inlet when possible. These tests ensure your turbo systems is free of any turbo destroying air leaks.



**4.** After all boost leaks have been fixed you can now ensure adequate oil level and coolant levels are present and all lines attached. We recommend synthetic engine oils for daily commuters and performance oils for racing applications. Start the vehicle and let idle for 5-10min. Check for any leaks and turn off vehicle if leaks exist. Assembly oil and anti-seize compound may be present, you may notice light smoke until it has burned off.



**5.** If installing a turbocharger that does not come factory on your vehicle you must ensure proper oil feed pressures and oil drain requirements are met for the type of turbocharger you are using. An ECU re-tune will be required for any performance enhancing turbo upgrade.



**6.** To keep your turbocharger eligible for warranty service you must keep receipts for the new oil feed line and new oil filter. We also require the buyer to send us a picture of your Boost Leak Tester attached to the turbocharger. We cannot emphasise enough how boost leaks are a major contributor of turbo failures and performance robbers. Thank you for choosing TPC inc as your turbocharger source.